

Title: **Community Nursing Staffing Levels**

Reference Number: RDF1315-23

Date of Response: 23/03/23

Further to your Freedom of Information Act request, please find the Trust's response(s) below:

I would be grateful if you could provide the figures for Community Nursing staffing levels:

1. What are the current % staffing levels across the Eastern locality areas? What are numbers of actual posts per head of population?

Please break these down into figures for each Community Nursing team as we think there are large differences between areas. Please describe range and grades of posts filled and vacant

Answer: Please see table below, note all percentage figures are based on Whole Time Equivalent (WTE) – indicating the % of the WTE that is filled, with the remainder of the % indicating the vacancy position.

No.	Community Nursing team	Current % staffing levels across Eastern locality areas?	No. of actual posts per head of population?	Range and grades of posts filled	Range and grades of posts vacant
1	Community Nursing - Axminster	All Grades - 74.17%	*	Band 3 Nurse Band 4 Nurse Band 5 Nurse Band 6 Nurse Band 7 Nurse	Band 5 Nurse Band 7 Nurse
2	Community Nursing - Crediton	All Grades - 88.69%	*	Band 3 Nurse Band 4 Nurse Band 5 Nurse Band 6 Nurse Band 7 Nurse	Band 3 A&C Staff Band 5 Nurse
3	Community Nursing - Cullompton	All Grades - 56.48%	*	Band 3 Nurse Band 4 Nurse Band 5 Nurse Band 6 Nurse Band 7 Nurse	Band 3 Nurse Band 4 Nurse Band 5 Nurse Band 6 Nurse Band 7 Nurse
4	Community Nursing - Exeter C&E	All Grades - 81.99%	*	Band 3 A&C Staff Band 3 Nurse Band 4 Nurse Band 5 Nurse Band 6 Nurse Band 7 Nurse	Band 2 A&C Staff Band 3 A&C Staff Band 3 Nurse Band 4 Nurse Band 5 Nurse
5	Community Nursing - HOSM	All Grades - 93.7%	*	Band 3 Nurse Band 4 Nurse Band 5 Nurse	Band 5 Nurse Band 6 Nurse

				Band 6 Nurse Band 7 Nurse	
6	Community Nursing - Okehampton	All Grades - 98.44%	*	Band 3 Nurse Band 4 Nurse Band 5 Nurse Band 6 Nurse Band 7 Nurse	Band 6 Nurse
7	Community Nursing - Seaton	All Grades - 113%	*	Band 3 Nurse Band 4 Nurse Band 5 Nurse Band 6 Nurse Band 7 Nurse	
8	Community Nursing - Sidmouth	All Grades - 78.69%	*	Band 2 Nurse Band 3 Nurse Band 4 Nurse Band 5 Nurse Band 6 Nurse Band 7 Nurse	Band 3 Nurse Band 4 Nurse Band 6 Nurse Band 7 Nurse
9	Community Nursing - Tiverton	All Grades - 73.92%	*	Band 2 Nurse Band 4 Nurse Band 5 Nurse Band 6 Nurse Band 7 Nurse	Band 5 Nurse
10	Community Nursing - WEB	All Grades - 76.32%	*	Band 3 Nurse Band 5 Nurse Band 6 Nurse Band 7 Nurse	Band 3 Nurse Band 5 Nurse Band 6 Nurse Band 7 Nurse

*The Trust does not hold this information.

2. *How does level of staffing and grades (detailed above) compare to those in place when Royal Devon & Exeter (RD&E) took over the contract for Community Nursing?*

Answer: Please see table and the Community Nursing Staffing Position Charts below. Note all percentage figures are based on Whole Time Equivalent (WTE) – indicating the % of the WTE that is filled, with the remainder of the % indicating the vacancy position.

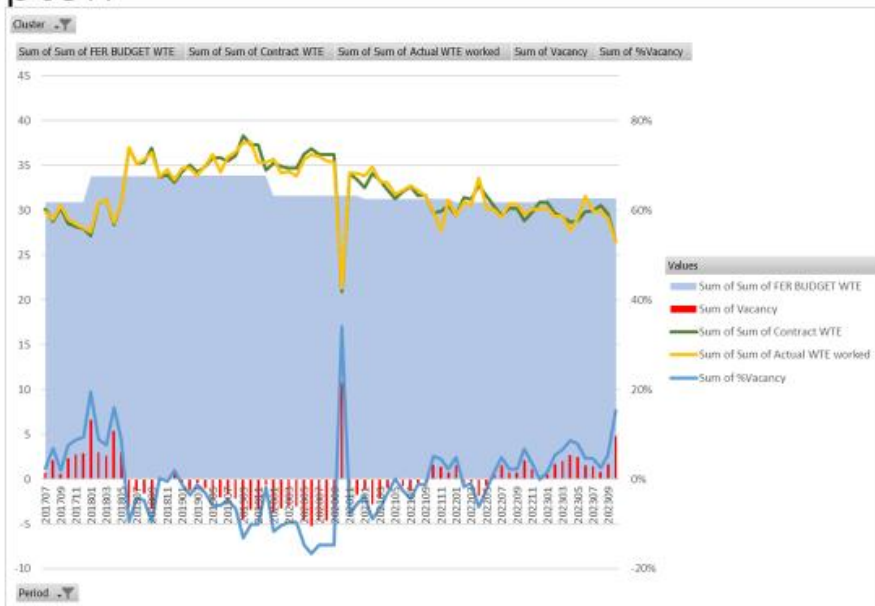
No.	Community Nursing team	% Staffing levels across Eastern locality areas when RD&E took over the contract for Community Nursing?	No. of actual posts per head of population when RD&E took over the contract for Community Nursing?	Range and grades of posts filled when RD&E took over the contract for Community Nursing?	Range and grades of posts vacant when RD&E took over the contract for Community Nursing?
1	District Nursing Axminster	All Grades - 81.13%	*	Band 3 Nurse Band 4 Nurse Band 5 Nurse Band 6 Nurse Band 7 Nurse	Band 5 Nurse Band 7 Nurse
2	District Nursing Crediton	All Grades - 103.82%	*	Band 3 Nurse Band 4 Nurse Band 5 Nurse Band 6 Nurse Band 7 Nurse	Band 5 Nurse

3	District Nursing Cullompton	All Grades - 99.8%	*	Band 3 Nurse Band 4 Nurse Band 5 Nurse Band 6 Nurse Band 7 Nurse	Band 5 Nurse
4	District Nursing Exeter	All Grades - 97.77%	*	Band 3 Nurse Band 4 Nurse Band 5 Nurse Band 6 Nurse Band 7 Nurse	Band 5 Nurse Band 7 Nurse
5	District Nursing Exmouth	All Grades - 97.09%	*	Band 3 Nurse Band 5 Nurse Band 6 Nurse Band 7 Nurse	Band 5 Nurse Band 6 Nurse Band 7 Nurse
6	District Nursing Okehampton	All Grades - 95.10%	*	Band 3 Nurse Band 4 Nurse Band 5 Nurse Band 6 Nurse Band 7 Nurse	Band 6 Nurse Band 7 Nurse
7	District Nursing Seaton	All Grades - 102.28%	*	Band 3 Nurse Band 4 Nurse Band 5 Nurse Band 6 Nurse Band 7 Nurse	Band 5 Nurse
8	District Nursing Sidmouth	All Grades - 102.27%	*	Band 2 Nurse Band 3 Nurse Band 4 Nurse Band 5 Nurse Band 6 Nurse Band 7 Nurse	
9	District Nursing Tiverton	All Grades - 101.74%	*	Band 2 Nurse Band 3 Nurse Band 4 Nurse Band 5 Nurse Band 6 Nurse Band 7 Nurse	Band 5 Nurse
10	District Nursing Honiton	All Grades - 86.99%	*	Band 2 Nurse Band 3 Nurse Band 4 Nurse Band 5 Nurse Band 6 Nurse Band 7 Nurse	Band 3 Nurse Band 6 Nurse
11	District Nursing Ottery St.Mry	All Grades - 115.22%	*	Band 3 Nurse Band 5 Nurse Band 6 Nurse Band 7 Nurse	Band 5 Nurse

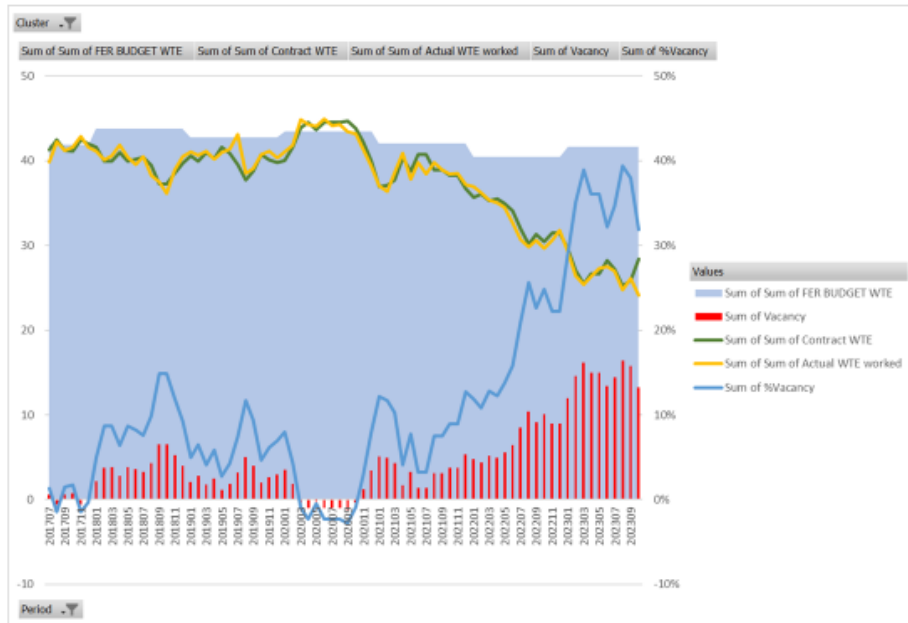
*The Trust does not hold this information.

Brief view of Community Nursing staffing position for East, Mid and Exeter

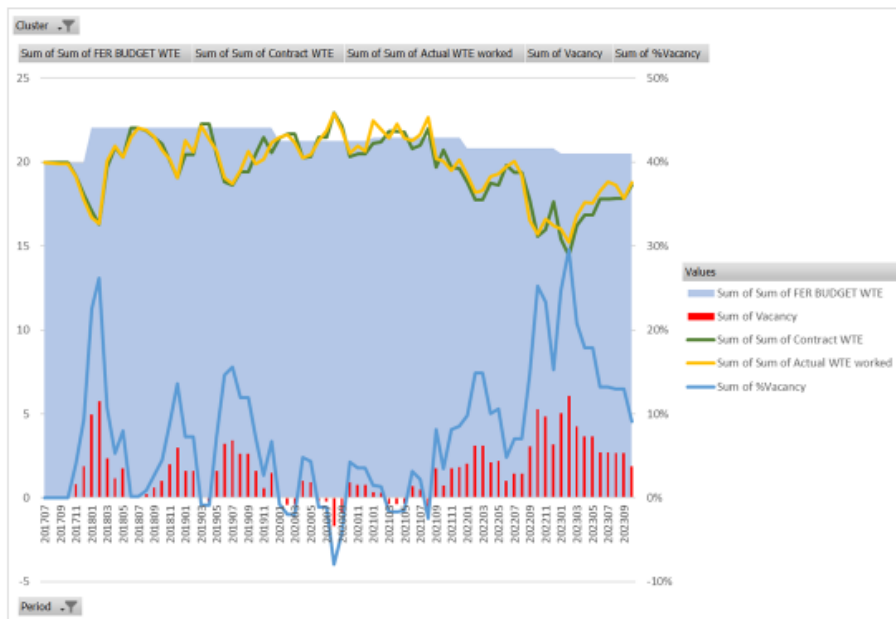
Crediton, Moretonhampstead and Okehampton



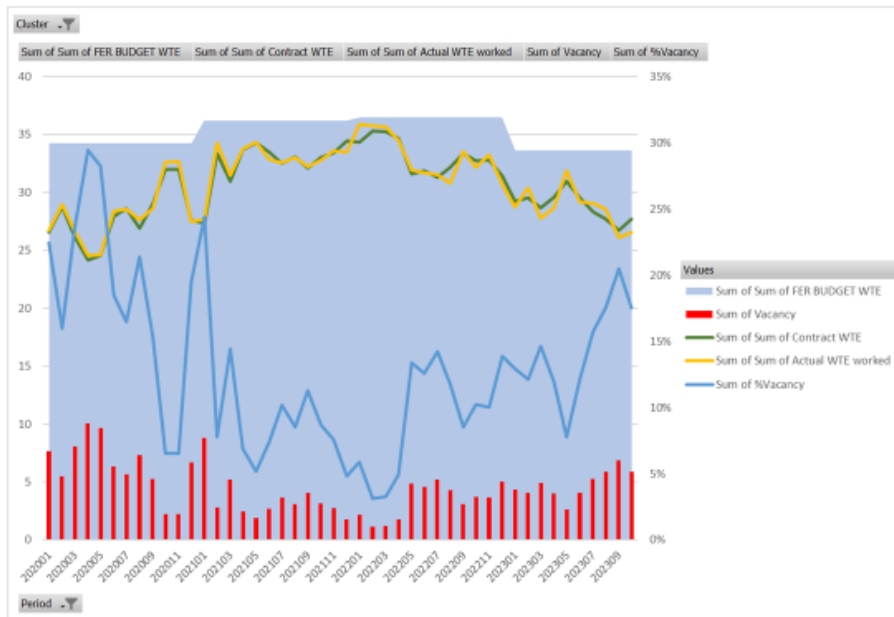
Tiverton and Culm Valley



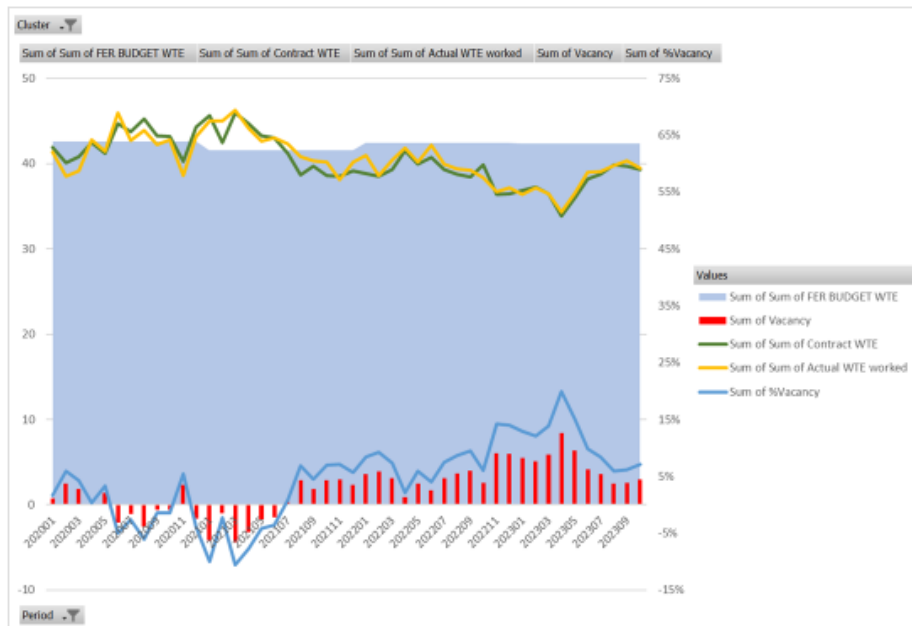
Honiton and Ottery St Mary



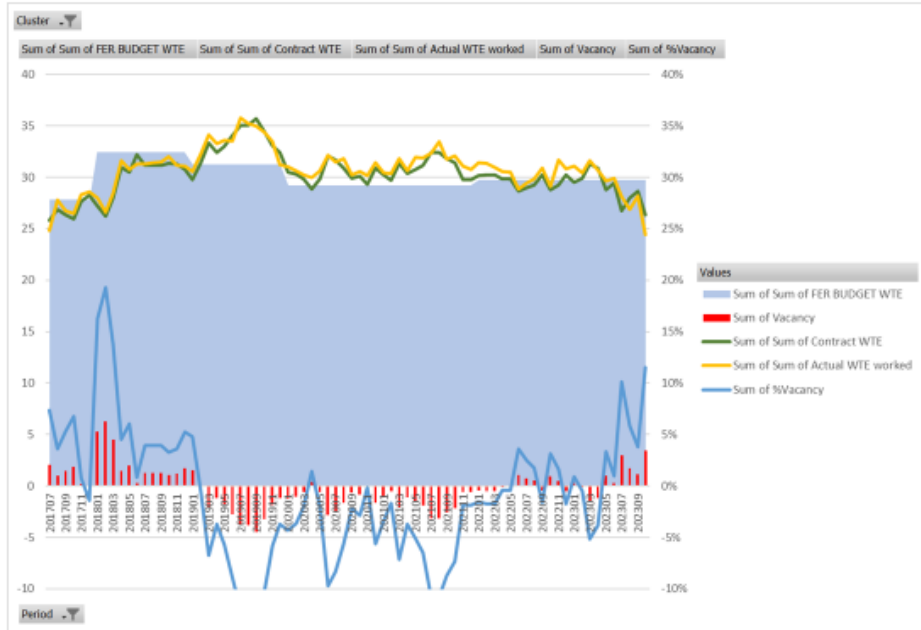
Exeter – Central and East



Exeter – South and West



Seaton, Sidmouth and Axminster



Woodbury, Exmouth and Budleigh

